

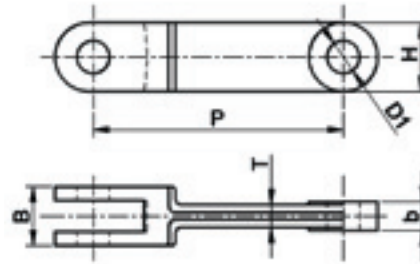
Forged Chains & Flights

Drop Forged Chains "Y" Serial



FEATURES

- It consists of forged steel links, which can be equipped with various plastic or steel scrapers. The connection pin between these links is in a circlip version.
- Special heat treated alloy steel, drop forged and precision machined, with case hardened.
- High strength, strong load-carrying capability.
- Extremely hard exterior surface and superior wear resistance.



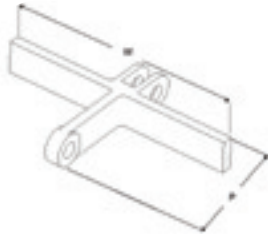
TECHNICAL SPECIFICATIONS

Model	P (mm)	H (mm)	B (mm)	D (mm)	b (mm)	T (mm)	Breaking Load (Min.)	Material
P100	100	30	33	14	15.5	13	140KN	40Cr
P125-B	125	35	34	17	17	8	150KN	40Cr
P142	142	50.8	43	25	19	12.2	180KN	20CrMnTi
							300KN	40Cr
P142H	142	50	62	25	29	15	280KN	20CrMnTi
							460KN	40Cr
P160	160	40	48	20	22.5	20	240KN	40Cr
P200	200	64	50	32	23	15	390KN	40Cr
P200-E	200	45	42	20	20	12.2	200KN	40Cr

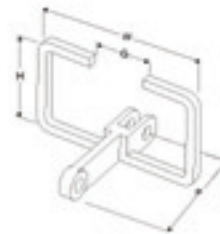
Note: Customized sizes and material are available upon request

Flight Attachment Types

Welded Steel Flights



Bar Attachment



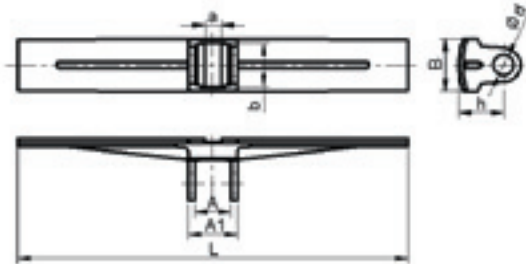
Frame Attachment

Note: Sizes can be customized upon request.

Plastic Flights

MATERIAL

HDPE, Nylon



SPECIFICATIONS

Model	Chain Model	L (mm)	a (mm)	b (mm)	A (mm)	B (mm)	h (mm)	d (mm)
FS-P142	P142	475	20	52	43	64	55	25
FS-142H	P142H	325	30	52	63	64	66	25

Note: For the flights fitted for other chain models can be customized on request.

Plastic Scraper Attachment Diagram

