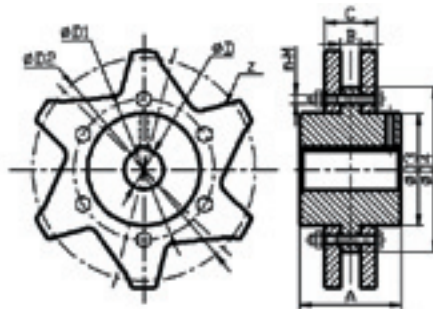


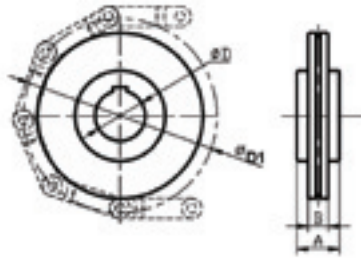
Chain Sprockets

Sprockets for Drop Forged Chains



Chain Model	Pitch (mm)	Gear Number Z	D2 (mm)	D (mm)	D3 (mm)	D1 (mm)	D4 (mm)	A (mm)	Number of Bolts	Bolt Size	B (mm)	C (mm)
P100	100	6	197.8	70	105	143	135	83	6	M12	16	36
	100	7	228.2	70	108	146	173	83	6	M12	16	36
	100	8	259.1	85	144	170	196	83	6	M12	16	36
	100	9	290.4	105	174	200	232	83	6	M12	16	36
	100	10	321.9	105	179	241.3	264	83	8	M12	16	36
P142	142	6	284	85	136.5	168.3	190.5	112	6	M12	16	46
	142	7	327.3	105	162	200	234	112	6	M16	16	46
	142	8	371.1	115	187.3	241.3	282	127	8	M20	16	46
	142	9	415.2	150	240	285.8	330	127	8	M20	16	46
	142	10	459.5	150	240	285.8	330	127	8	M20	16	46
	142	11	504	170	310	368.3	419	150	8	M20	16	46
	142	12	548.6	170	345	415	465	150	8	M20	16	46
	142	13	593.4	170	380	470	521	150	8	M20	16	46
	142	14	638.1	170	380	470	546	150	10	M20	16	46
P142H	142	7	327.3	105	162	200	234	127	6	M16	18	69
	142	8	371.1	115	187.3	241.3	282	150	8	M20	18	69
	142	9	415.2	150	240	285.8	330	150	8	M20	18	69
	142	10	459.5	150	240	285.8	330	150	8	M20	18	69
	142	11	504	170	310	368.3	419	150	8	M20	18	69
	142	12	548.6	170	345	415	465	150	8	M20	18	69
	142	13	593.4	170	380	470	520	180	8	M20	18	69
	142	14	638.1	170	380	470	546	180	10	M20	18	69

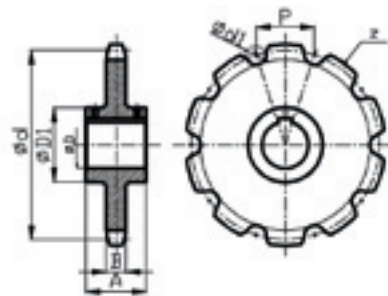
Trailers for Drop Forged Chains



Chain Model	Gear Number Z	D1 (mm)	D (mm)	A (mm)	B (mm)
P100	6	197.8	65	57	35
	7	228.2	65	57	35
	8	259.1	65	57	35
	9	290.4	65	57	35
	10	321.9	65	57	35
P142	6	284	85	74	45
	7	327.3	85	74	45
	8	371.1	85	77	45
	9	415.2	115	77	45
	10	459.5	115	77	45
	11	504	115	105	45
	12	548.6	115	105	45
	13	593.4	115	120	45
P142H	7	327.3	115	110	75
	8	371.1	115	110	75
	9	415.2	115	110	75
	10	459.5	115	120	75
	11	504	140	120	75
	12	548.6	140	120	75
	13	593.4	140	120	75
14	638.1	140	140	75	

Note: Customized sizes and material are available upon request

Sprockets for Roller Conveyor Chains



Chain Model	Pitch (mm)	Gear Number Z	d1 (mm)	d (mm)	D (mm)	D1 (mm)	A (mm)	B (mm)
66.675	66.675	6	22.23	133.41	40	75	80	22.8
	66.675	7	22.23	153.74	40	75	80	22.8
	66.675	8	22.23	174.31	50	100	100	22.8
	66.675	9	22.23	195.04	50	100	100	22.8
	66.675	10	22.23	215.87	60	110	100	22.8
	66.675	11	22.23	236.78	60	110	100	22.8
	66.675	12	22.23	257.74	60	110	100	22.8
100	100	8	36	261.44	60	110	100	33.2
	100	9	36	292.52	70	120	100	33.2
	100	10	36	323.77	70	120	100	33.2